



Tt[®] **eSPORTS**
By Thermaltake

POSEIDON Z

GUI SOFTWARE GUIDE VER 1.3.01



A CONTENTS

PAGE	01	Main Interface	
		● Main	----- 01
		● Profiles	----- 02
		● Normal Mode / Game Mode	----- 03
		● Key Assignment	----- 04
PAGE	09	Macro Setting	
		● Macro Setting Interface	----- 09
		● Macro Manager	----- 10
		● Macro Record Setting	----- 11
		● Macro Record Timeline	----- 12
		● Insert Command	----- 14
PAGE	15	I.S.S (Instant Shift System)	
		● I.S.S Button and Setting	----- 15
PAGE	17	Light Setting	
		● Light Option Interface	----- 17
		● ZONE One : Keyboard	----- 18
		● ZONE Two : Layer	----- 19
		● ZONE Three : Color Control	----- 20
		● ZONE Four : Effect Control	----- 21
PAGE	22	Firmware Update	
		● How to Update Firmware	----- 22

| CONTENT ONE Main Interface



Reset / Register / Guide / Close

Reset : Reset all setting

Register : Register as Tt eSPORTS's follower and receive updates from Tt eSPORTS via E-mail.

Guide : Configuration software manual

Close : Close Tt eSPORTS POSEIDON Z RGB GUI Software

Page : 03

Indicator Normal/Game Mode

The Macro frame indicates the Mode (Normal/Game) which you are.

*Normal/Game Mode can be switched on-the-fly with the Windows Disable Key located at the Top-Right Button on POSEIDON Z RGB Keyboard.

Key Assignment

Assign function to each key [Page : 04](#)

Apply / Cancel / OK

Apply: Click Apply after completing profile setting and for importing setting

Cancel: Click Cancel if you wish to cancel the setting

OK: Click OK after setting has been completed



Page : 02

Profile

POSEIDON Z RGB has 5 profiles setting .

Macro Manager / Light

Macro Manager [Page : 09](#)

Light Option : [Page : 17](#)

Change POSEIDON Z RGB light

Page : 15

INSTANT SHIFT SYSTEM

I.S.S allows users to use either the Shift, Ctrl, or Alt key to quickly switch between macro groups



Tt eSPORTS GUI of Profile

Tt eSPORTS' offers users to set profiles for different purposes and offers gamers to customize their own macros, making it one-of-a-kind!



Switch to Profile by Software

Choose the Profile you wanted to switch to

Switch to Profile by Hardware

Click the Hotkey as below:

Fn + Insert : switch to Profile 1

Fn + Home : switch to Profile 2

Fn + Page Up : switch to Profile 3

Fn + Delete : switch to Profile 4

Fn + End : switch to Profile 5



More Macro Key for Games

Tt eSPORTS develops a powerful macro setting. Just switch the Mode Key on the keyboard to either normal or game mode and you can experience a powerful and useful function!

You can program more macro keys when you switch to Game Mode! This will make the POSEIDON Z RGB a gaming weapon that will enhance your gaming experience!



Normal Mode

In Normal Mode

- Standard Keyboard without any Macro function.

Game Mode

In Game Mode, Left Windows key will be locked. And only in Game Mode can set Macro function

- You can set all the keys to macro keys besides the Windows Key and Fn Key.



Normal and Game Mode Comparison

Mode \ Key Assignment	T Key	Single Key	Launch Prgm
Normal Mode	0	0	0
Game Mode	102(All keys besides Win and Fn key)	102(All keys besides Win and Fn key)	102(All keys besides Win and Fn key)

*T Key is an assignment command which can be set to a key to become a macro key. (More information about T Key please go to Page 6)

Customization for each of POSEIDON Z RGB's Key

Each POSEIDON Z RGB's button can be customized as your preferred key in Game mode, even A to Z or F1 to F12 can be changed!
Customize it and make the POSEIDON Z RGB your very own ultimate weapon to conquer!

POSEIDON Z RGB Can Do More than You Expected!

Key Configuration

Click on each key to change its function (See right picture)

Click each key to assign functions. Once the key which had been chosen or been set it will become Red

Key Assignment

Choose the key to manage function



4 Key Functions to be Assigned!

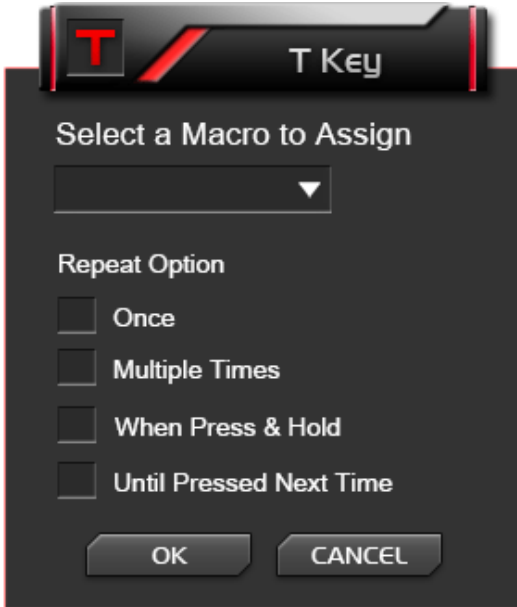
Keys can be assigned for four functions (Macro(T Key) / Single Key / Default / Launch Program).



- Default :** Keys will all be recovered back to original setting
- Macro(T Key) :** Assign macro that has been recorded from Macro Manager.
- Single Key :** Set any key to become a key signal (i.g. : “A” key as the “B” signal)
- Launch Program :** Set any key to launch a program.

Macro (T Key)

T Key is the Macro key that you programmed.



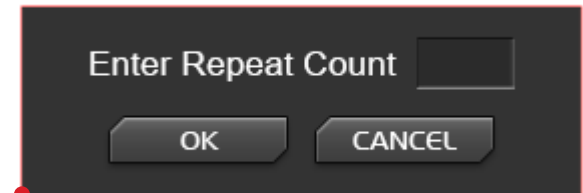
Assign macro

Select a programmed macro that already recorded from Macro Manager ([Macro record information, see Page 09](#))

Repeat

Customize the times that you want to have the macro repeats..

- Once :** Macro will repeat once.
- Multiple Times :** Macro will repeat depends on the repeat count set.
- When press & hold :** Macro will keep repeating as long as you press and hold the key.
- Until press next time :** Macro will start repeating until you click the key again.



Single Key

Change a Key to become other key signal.
I.G. Choose "A" key and change it become "B" key.



Default

POSEIDON Z RGB **each of key** has its own pre-configured functions, which is the default. If you wanted to change back to the default **function**, you can just choose Default and it will be changed back to the pre-configured functions.



Launch Program

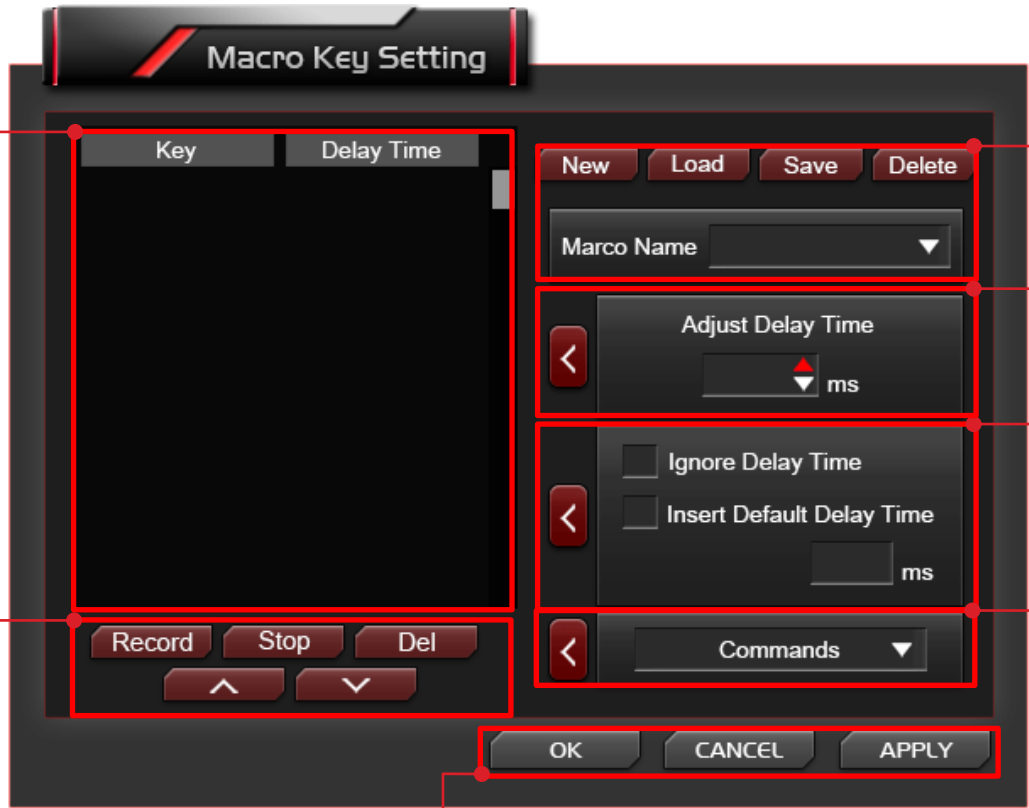
Pre-set a program and the program will showed up whenever you click on the keys that has been programmed.



Launch Program button

Click the Launch Program button and system will pop out the file manager for you to choose the program that you want to launch.

| CONTENT TWO Macro Setting



Page : 12

Record Macro Timeline

To check the programmed macros.

Page : 10

Macro Manager

Create / Load / Save / Delete Macro and Modifying Macro Name.

Page : 11

Adjust Delay Time

Customize the delay time

Page : 11

Macro Record Setting

2 selections for delay time

Page : 12

Macro Modification

Start and Stop recording macros or modified recorded macros

Page : 14

Commands

Set commands to macro

Apply / Cancel / OK

APPLY: Click Apply when Macro Setting completed

CANCEL: Click Cancel to cancel the setting

OK: Click OK after Macro Setting has been fully completed

Macro Manager

Macro manager allows you to create, delete, save and load a macro.



Manage Macro

NEW / DELETE / SAVE / LOAD macro

NEW - Create a new Macro

DELETE - Delete existing Macro

SAVE - Save a Macro .

LOAD - Load a Macro that had been saved.

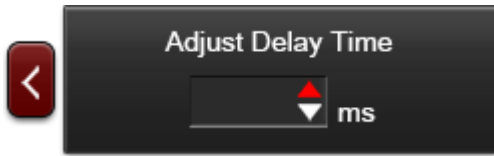
Macro Name

Select a Macro.



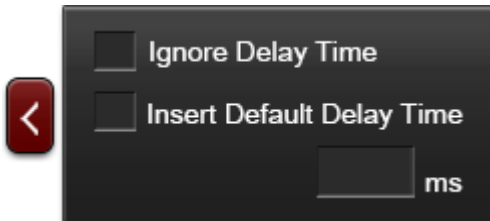
Macro Record Setting

3 selections provided for you to choose for setting the Delay Time.



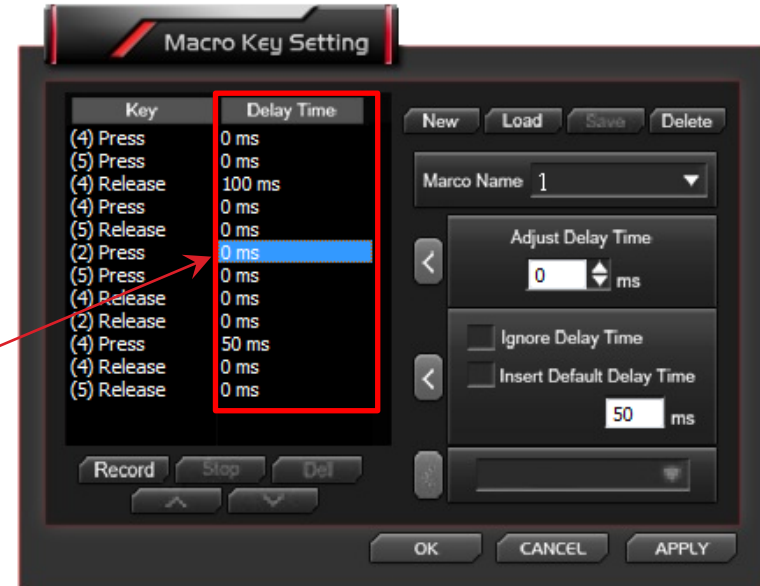
Adjust Delay Time

You can adjust Delay Time that already record.
If want to Adjust Delay Time, select the particular Delay Time and start adjusting.
*Interval for Each of Delay Time is 50ms



Macro Delay Time Setting

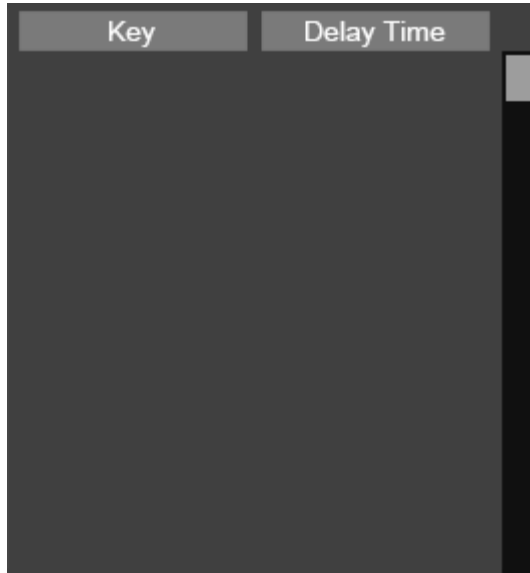
Ignore Delay Time : No delay time between key signal.
Insert Default Delay Time ___ ms : Delay time depend on the preferred time set.
*Before you record Macro, you should set to ignore or insert default Delay Time.
*Insert Default Time interval has to be 50ms





Macro Record Timeline

Allow you to program your macro as preferred.



Record program : Click Record to start recording via your keyboard or mouse and all signal will be recorded on this timeline.



Delete signal : Choose the recorded signal that you wish to delete (Once signal has been chosen, the background will turn RED as below picture)



Click Delete and the selected signal will be removed.



Stop program : Click Stop whenever recording has been completed.



Macro Record Timeline

You can modify the signal order once Macro Name and Recording have been completed.



Switch signal up or down

Select the signal and click Up/ Down to rearrange the recorded signals

Note : Please be careful while arranging the “Press” & “Release” signal

Key	Delay Time
'1'	2ms
'1'	0ms
'2'	4ms
'2'	0ms
'3'	0ms
'3'	0ms

Choose “3” and press “UP” or “DOWN” to arrange →

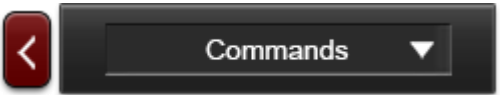
Key	Delay Time
'1'	2ms
'1'	0ms
'3'	0ms
'3'	0ms
'2'	4ms
'2'	0ms

Insert Command

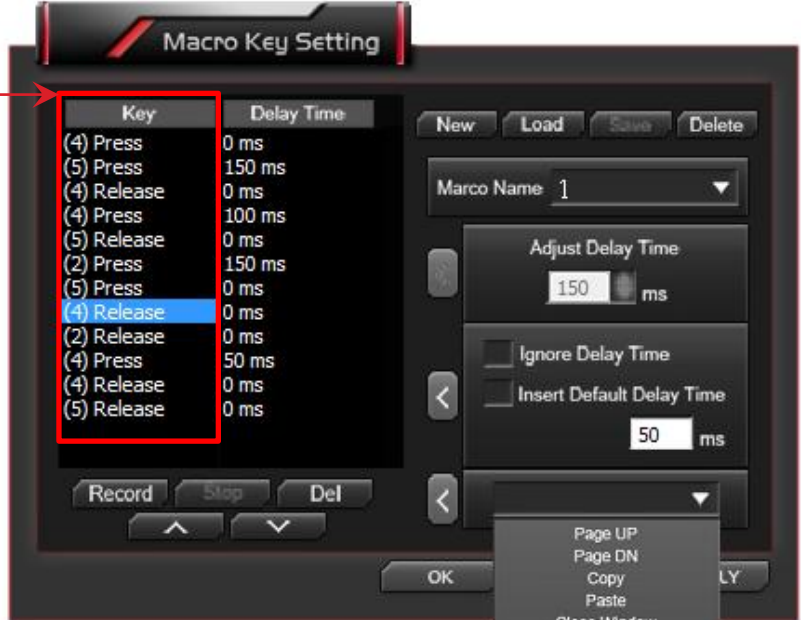
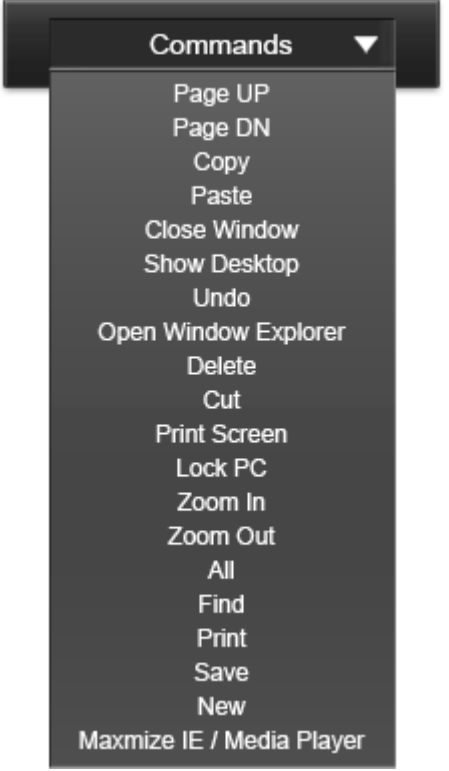
If you want to modify or insert Command to the programmed macro, please click the Command button and select a command into macro from the drop down selection.

Insert Command

Choose the key that you want to insert the "Commands" to.



Select a command as below picture



| CONTENT THREE Instant Shift System



POWERFUL I.S.S function create by Tt eSPORTS

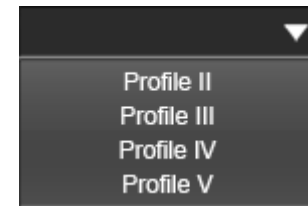
Instant-Switch-System (I.S.S.) allows for instant access to all stored macros, without changing profiles. Only in Game Mode can boost I.S.S.



Click I.S.S Boost button at GUI Main Page to shift profiles

Click I.S.S allows users to use either the Shift, Ctrl, or Alt key to quickly switch between macro groups.

Boost I.S.S. ONLY in Game Mode.



| CONTENT FOUR Light Setting



Page : 18

ZONE ONE : Keyboard

Keyboard : Select color and Drag or click key.
Circle : Click to reset light option.
Brightness : Drag to adjust brightness.

Page : 19

ZONE TWO : Layer

Layers can be added and can create your own color puzzle at POESIDON Z RGB.
Effect Layer : Only one set for creating the whole Keyboard light.
Base Layer : Basic layer can be customized with different color.

Page : 21

ZONE FOUR : Effect Control

Five Effects for you to select and customize on POSEIDON Z RGB.

Page : 20

ZONE THREE : Color Control

Choose the colors you like.
There are two ways to pick a color:
1.Type (0~255,0~255.0~255)
2. Type Color Code

SAVE / LOAD Mode

Share your own POSEDION Z RGB color set to everyone!!
Or Load any settings created by users from around the word who uses the POSEIDON Z RGB.

OK / CANCEL/ APPLY

OK: Click OK to save the setting
CANCEL: Click CANCEL to cancel the setting
APPLY: Click APPLY to save the setting

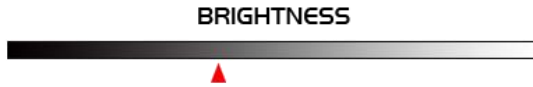


RESET Button

Click to reset profile.
This will reset back to the default setting.
And all base layers set will be deleted.

Key color preview and set

Before you want to set the key color.
There are steps you should know before:
1. Effect Control [FULL ZONE] only set all keyboard color
2. Effect Control [Customized ZONE] can set each key to different color



Keyboard brightness adjust

You can adjust all back light brightness by Software. There are five levels brightness (included OFF)



Drag to assignment Key color

Assign area to become a color by dragging the mouse to make a area become a color.
Before assign key color you should pick a color at Color Control.



Click to assignment per Key color

Assign single key become a color, you can click mouse left button to make a key become a color.
Right click if you want to cancel key color.
Before assign key color, you should pick a color at Color Control.



EFFECT LAYER

Only one set to make all keyboard color become a color or default effect. Depends on what kind of effect.



BASE LAYER

To make each key with different color.

There is a default set you can choose as well.

You can even customize the name. Just double click on set. You can change the name of the set.



ADD/DELETE LAYER

Only add or delete BASE LAYER set.



Color Control

R : 000 (0~255)

G : 000 (0~255)

B : 000 (0~255)

Color Code :

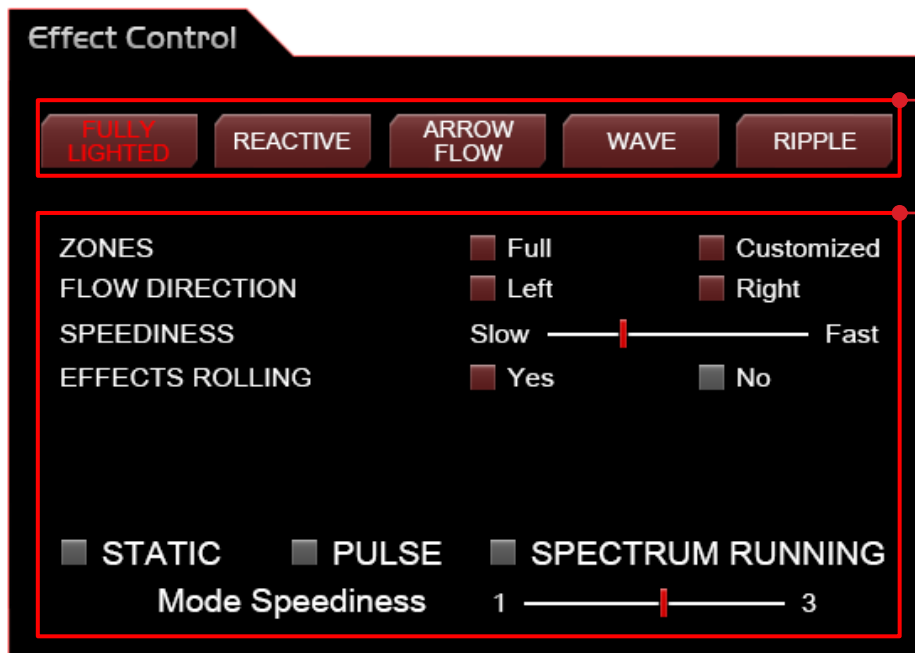
000000

Preview on the color you have selected

Select a color. The left is Hue Bar

Select 0 to 255 for the colors you desire.
Each of primacy color have 256 gray

Choose your own Color Code



Choose Effects : Five effect to choose.

Effects preview, please check [POSEIDON Z RGB official website](#).

Effect adjust terms

ZONES : select all keys or per key set.

FLOW DIRECTION : select Effect direction.

SPEEDINESS : adjust Effect speeding.

EFFECTS ROLLING : select Effect finishing or not can action again

[STATIC] [PULSE] [SPECTRUM RUNNING] can only be used in **FULLY LIGHTED** mode.

Mode Speediness : Adjust the effect speed (3 levels) for both [PULSE] and [SPECTRUM RUNNING].

Option / Effect	FULLY Lighted	REACTIVE	ARROW FLOW	WAVE	RIPPLE
ZONE	Full / Customized	Full / Customized	Full / Customized	X	Full / Customized
FLOW DIRECTION	X	X	Two Ways	Two Ways	X
SPEEDINESS	X	X	Yes	Yes	Yes
EFFECT ROLLING	X	X	Yes	X	YES
[STATIC] [PULSE] [SPECTRUM RUNNING]	YES	X	X	X	X

| CONTENT FIVE Firmware Update



Update Your POSEIDON Z RGB Firmware

The New GUI can automatically detect new updates whenever there is new update available for installation.

You will just need to plug the POSEIDON Z RGB and launch GUI and system will notify you about the new update.

If you missed or closed the update, just re-plug in POSEIDON Z RGB and launch POSEIDON Z RGB GUI and system will notify you again.

